



*Solutions for all your IC test needs*



**TestEdge, Inc.**  
**15930 Bernardo Center Drive**  
**San Diego, CA 92127**

## **Complete Test Solutions for:**

**Digital**  
**Mixed-Signal &**  
**Analog Devices**

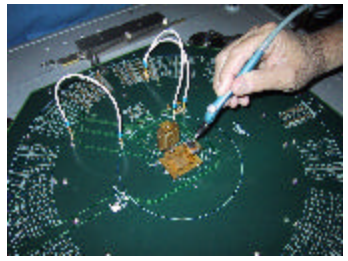
Prototype Debug  
Package Engineering  
Characterization  
Data Reduction and Analysis  
Release to Production  
Product Engineering/Sustaining  
Yield Enhancement  
Production Management  
Custom Test Fixture Design

***Cradle-to-Grave***  
***Component Responsibility***

[www.testedgeinc.com](http://www.testedgeinc.com)

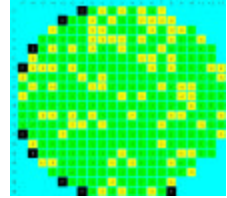
## Test Competencies:

- ◆ Digital, mixed signal & analog
- ◆ Remote test capability
- ◆ Semi-automatic test generation
- ◆ Automatic data collection and reduction
- ◆ High performance test fixturing
- ◆ Format independent Vector translation
- ◆ High power testing with liquid cooling
- ◆ Customer/Supplier problem ownership



## Wafer Sort Experience:

- ◆ State of the art Electroglas probes
- ◆ Sort experience with high probe count
- ◆ Less than 4 mil pitch on probes
- ◆ Experience with C4 Bump and Aluminum pad
- ◆ Experience on Bipolar, CMOS, GaAs & SiGe
- ◆ Detailed wafer maps



## Characterization Reports:

Device performance characteristics over voltage and temperature is gathered on the test equipment and loaded into the TestEdge data base. This information is analyzed and a detailed characterization report is generated. This report will show how the device performs over temperature, voltage and process corners. This information will be used to determine the production test limits and is often used in device specifications.

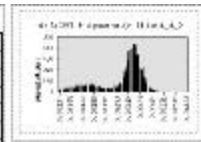
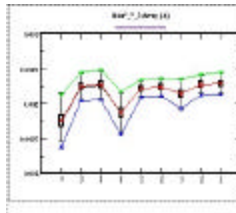
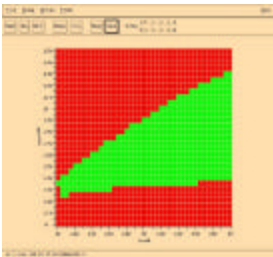


Table 11-1.  $I_{bias}^{min} \sim 3$  (A) @  $V_{DC} 3.3, 3.6V$

max( $\sigma$ )	avg( $\sigma$ )	min( $\sigma$ )	std $\sigma$	count( $\sigma$ )
0.000499	0.000250	0.000130	0.000090	7552

## ATE Platforms:

TestEdge will use the most cost effective ATE platform for your product. In-house ATE platforms and lab equipment are used when applicable. If additional capacity or performance is required, we use our remote test capability. Our experience extends across several platforms including Credence, IMS, Teradyne, Agilent, Advantest, Schlumberger, etc.

### **TestEdge Staff:**

TestEdge engineers average 16 years of engineering experience in test, packaging and fixturing. This experience is across a wide spectrum of products, customers and ATE platforms.

### **Product Experience:**

The range of devices worked on include all of the following:

- ◆ 1KHz to 1GHz DACs & ADCs
- ◆ USB 1.0 & 2.0
- ◆ SerDes (1.25, 2.5 & 3.125 GBs)
- ◆ 10/100 BaseT
- ◆ Audio CODECs
- ◆ Set-top-boxes
- ◆ Fingerprint recognition units
- ◆ Personal LCD eyeglasses
- ◆ RAMs, CAMs, FLASH, RAMDACs, etc.
- ◆ High speed & high pin-count digital devices

### **Customers:**

Our customer base is diverse and consists of consumer electronics firms, telecommunication companies, the automotive industry, the US Government, etc.

### **Packaging Experience:**

With over thirty years of combined package engineering experience in organics and ceramics, TestEdge can provide technical support for bringing chip, package and assembly together with a commitment to meeting and exceeding your requirements, from R&D to production. We can supply:

- ◆ Package selection
- ◆ Cost, performance & thermal tradeoffs
- ◆ Die pad & wire bond constraints
- ◆ Production feasibility studies
- ◆ Off-shore and domestic production interface



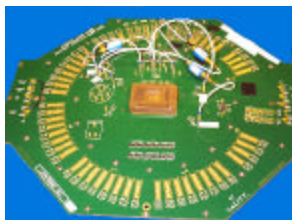
TestEdge has ATE and support equipment on site to meet our customer's needs. This includes Electroglas probes, thermal forcing units, inspection microscopes and a wide range of lab equipment.

TestEdge has two Credence Quartets. These platforms have 320 & 384 high speed digital channels with extensive mixed signal capability from the audio range to 6 GHz. Both systems have wafer sort capability.



Our IMS ATS2 FT has 384 digital channels. This system is configured as a Telecom-Datacom platform. Contains a wide variety of mixed signal instrumentation and can characterize 3.125GBs SerDes.

Test fixture design requires knowledge of the device, socket and ATE characteristics. TestEdge understands the potential fixturing issues and provides high performance, low noise test fixtures.



### Directions from San Diego Airport to TestEdge

Leaving airport take Harbor Drive East to Grape Street, turn left. Stay in right lane onto I-5 South and exit onto Hwy 163 North (Escondido). Hwy 163 North later merges with and becomes I-15 North.

Exit Bernardo Center Drive. Turn left onto Bernardo Center Drive. Turn right at West Bernardo Drive. Immediately turn left into first driveway. TestEdge is last office on the right.

### For additional information or quotes, contact:

Craig Bousquet  
Bob Thomas  
Todd Koenig

(858) 451-1012 x308  
(858) 451-1012 x312  
(858) 451-1012 x311

[www.testedgeinc.com](http://www.testedgeinc.com)